

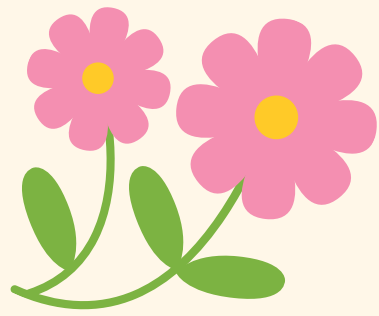
Important things that tests can't measure...



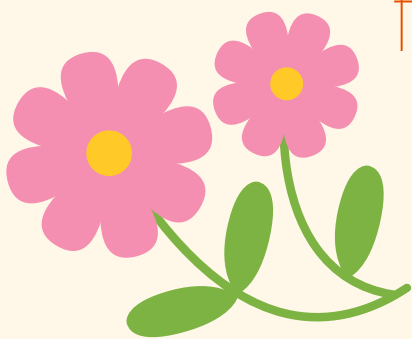
creativity self-control
wisdom motivation
intuition affection loyalty
peacefulness perspective
rhythm faithfulness
honesty determination kindness
courage patience
perseverance spirituality
gentleness joy thoroughness
thoughtfulness generosity
helpfulness flexibility
discernment love character
friendliness compassion
sensitivity confidence



Important things that tests can't measure...



creativity
wisdom
self-control
intuition
motivation
affection
loyalty
peacefulness
perspective
rhythm
faithfulness
honesty
determination
kindness
courage
patience
perseverance
spirituality
gentleness
joy
thoroughness
thoughtfulness
generosity
helpfulness
flexibility
discernment
love
character
friendliness
compassion
sensitivity
confidence



Important Things That Tests Can't Measure

creativity **generosity**
wisdom faithfulness compassion
intuition self-control
thoughtfulness thoroughness
peacefulness sensitivity
character gentleness
confidence perspective
patience **joy** affection
kindness motivation
honesty **love**
flexibility spirituality
courage perseverance
friendliness **rhythm** loyalty
determination helpfulness